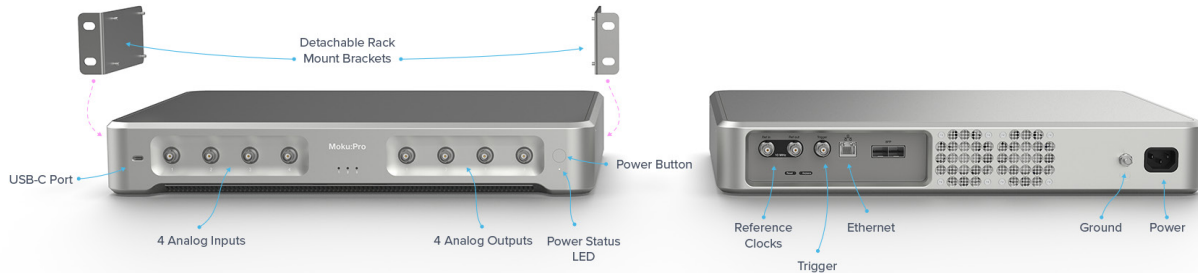


Moku:Pro Quick Start Guide



Moku:Pro Layout



Powering On & Off

- 1 Connect the power cable to the power port at the rear of the Moku:Pro.
 - 2 Press and hold the power button for one second until the power status LED starts to flash.
 - 3 Once the power status LED turns solid white, your device is ready to use.
- ⊗ To power off your Moku:Pro, press and hold the power button for one second until the power status LED starts to flash. Wait until the LED turns off before unplugging.

Power LED	Device status
Blinking	Powering on / off
On	Ready

Installing The Moku: App On Your iPad

- 1 Open the App Store on your iPad.
- 2 Search for the Moku: application and verify that the publisher is Liquid Instruments.
- 3 Download and Install Moku: on your iPad.



Connecting To Your Moku:Pro For The First Time

You can connect to your Moku:Pro for the first time via its Wireless Access Point or Ethernet.

Option 1: Wireless Access Point

On your computer, join the Wi-Fi network called “MokuPro-#####”, where “#####” is the 6-digit serial number of your Moku:Pro printed on the bottom of the device. The default password is printed alongside the serial number, labelled as PSK (pre-shared key).

Option 2: Ethernet Cable

Connect your Moku:Pro to a router via an Ethernet cable. Make sure your iPad is connected to the same network.

Getting Started With The Moku

Once you have connected your Moku:Pro to your iPad, you can start using your device with the Moku.

- ① Launch the Moku on your iPad.
- ② Moku:Pro devices that are connected to the same network as your iPad will show up on the “Select your device” page.
- ③ Tap your Moku:Pro icon to start using your device. The default name of your Moku:Pro is “Moku #####”, where “#####” is the 6-digit serial number printed on the bottom of the device.
- ④ On the “Select your instrument” menu, tap an instrument icon to deploy the instrument.
- ⑤ To discover how to use each instrument, refer to the “Accessing instrument manuals” section below.

Configuring Your Moku:Pro To Join An Existing Wireless Network

Once you have connected to your Moku:Pro to an existing wireless network following these instructions:

- ① Open the iPad App and tap the icon of your Moku:Pro on the “Select your device” screen.
- ② Tap the Settings gear at the bottom left of the screen to configure the Moku:Pro’s settings.
- ③ Select the “Join” access mode and type in the name of the Wi-Fi network you’d like to connect to. You will be prompted to enter a password for that network if required.
- ④ Connect your iPad to the same Wi-Fi network. The iPad will search for Moku hardware on the same network.

You can also connect Moku:Pro to a network router/switch via Ethernet cable.

Accessing Instrument Manuals

Instrument manuals for each instrument are available in the Moku. To access these tutorials, deploy the desired instrument and press the main menu button at the top left of the screen, then select “Show Help”.



Factory Resetting Moku:Pro

Moku:Pro must be plugged in and powered on to perform a Factory Reset. You can return your Moku:Pro to its default network and configuration settings by pressing the Factory Reset button at the back of the device with a paper clip or small object for two seconds. The Power LED will turn off once the unit reinitialization is completed. You can now power on your Moku:Pro by pressing and holding down the power button. It will restart in Wireless Access Point mode with Ethernet enabled where applicable.